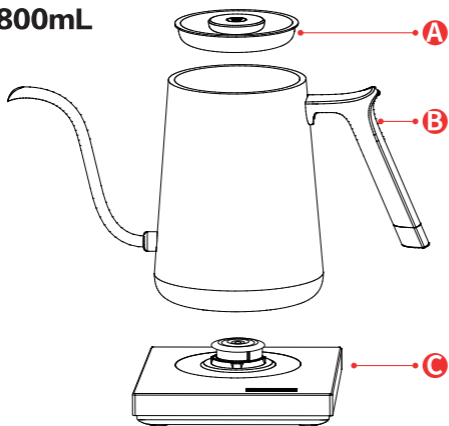


ELECTRIC KETTLE 800mL/600mL
User' s Manual

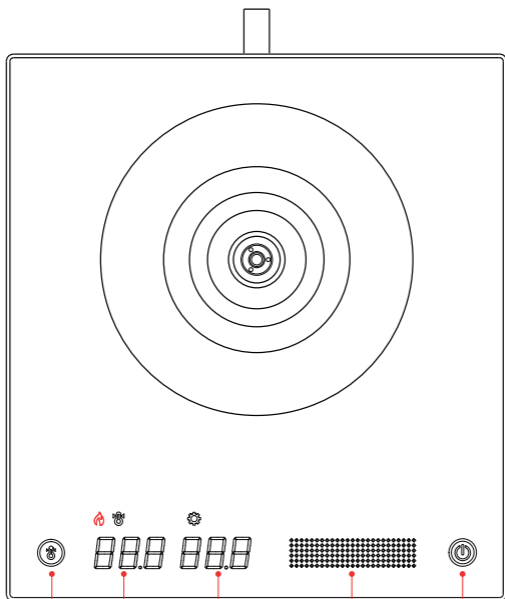
800mL



- A** Lid
- B** Kettle
- C** Base

600mL





1

2

3

4

5

Hold / Long press
for 100°C

Current
Temp. °C

Target
Temp. °C

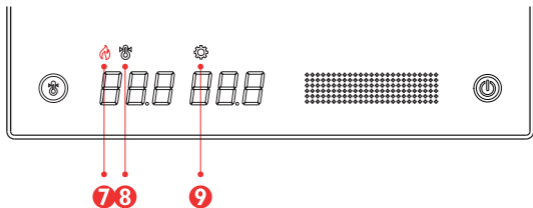
Slide slightly to
set Temp.

Stand-by



6

Power Toggle

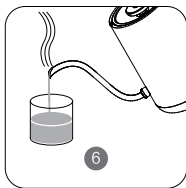
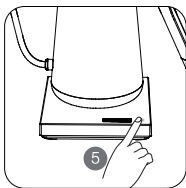
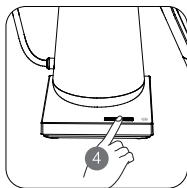
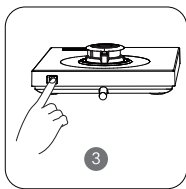
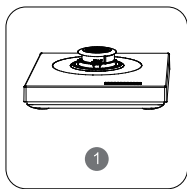


- 7** Heating Indicator: shows if the kettle is heating or not.
Light on means heating.
- 8** Hold indicator: light on means the kettle is in HOLD mode.
When real Temp. is lower than the target Temp. , it will
heat up automatically till it reaches the target Temp.
- 9** Set-up indicator: light on means the device is in the Temp.
setting state.

How to Use

- ◆ Please confirm whether the power of the socket you are using can stand the device.
- ◆ Do not fill water inside of the kettle above the Max point.
- ◆ It is recommended to clean the kettle by boiling twice for the first time use.

1. Place the device on a flat surface for use.
2. Remove the lid and then add water.
3. Confirm the back power toggle is turned on.
4. Set the target Temp. by gently touching and sliding Touch Temp. Controller.
5. Press the start button and wait till the current Temp. reaches the target Temp.
6. Pour water slowly and start to brew.



Notes

01. Do not fill water inside of the kettle above the Max point. If the kettle is overfilled, boiling water may be ejected. Please avoid liquid spillage into the connector.
02. Cover the lid when it is heating. Do not move the lid when water is boiling.
03. The appliance is not to be used by persons (including children) with reduced physical, sensory or mental capabilities, or lack of experience and knowledge, unless they have been given supervision or instruction.
04. Children being supervised not to play with the appliance.
05. Do not disassemble or repair the device by yourself. If the power cable is damaged, please contact the manufacturer to repair to avoid danger.
06. Do not immerse the kettle's the bottom or the base in water or any other liquids.
07. Do not boil when there is no water inside of the kettle.
08. Do not touch the surface of the kettle in or after boiling to avoid burns.
09. Please turn off the power toggle and pull out the plug when you don't use it.
10. The kettle can be used only on this base.
11. At high altitudes, this device may not be heat to the target Temp. and there might be a risk of boiling spillage.
12. It may get some limescale inside the kettle if you don't use purified water, which is a normal phenomenon.
13. This appliance is intended to be used in household and similar applications such as:
 - staff kitchen areas in shops, offices and other working environments;
 - farm houses;
 - by clients in hotels, motels and other residential type environments;
 - bed and breakfast type environments.
14. Please use electric kettle by User Manual, improper usage may cause harm.



Specification

01. Product Name: Electric Kettle
02. Temperature error: plus or minus 3°C
(depending on the different atmosphere in different regions)
03. Range of Hold Temperature: 45°C – 98°C
04. Storage temperature: -10°C to 55°C
05. Use temperature: -10°C to 60°C
06. Button control: capacitive touch button, no need to press hard and capacitive sliding touch bar
07. Auxiliary notification: built-in buzzer
08. 800mL Voltage: 220-240V~ Heating power: 1500W Capacity : 800mL control and data power doesn't exceed 5W
09. 600mL Voltage: 220-240V~ Heating power: 1000W Capacity : 600mL control and data power doesn't exceed 5W

Q&A

Q: Why there is rusty point in the inside of kettle?

A: The scale deposit caused by microelement in the water, when user put regular water (Non purified water) in the kettle. Please clean the scale deposit on time to ensure the product can be worked normally.

Q: What should I do if the kettle dry-boiling?

A: User press the start heating button by mistake when no water or water is less than minimum level of the pot, Boil-dry protection would make kettle power off automatically. Since Dry-boiling may cause damage to the temperature-sensing part in the pot, this situation is not covered by the warranty. If the kettle dry-boiling, switch off the power first, then add some water in the pot, and switch on the power when the kettles colds down.

Q: Why the screen display the temperature is higher than I set?

A: It is recommended add more than 500mL water in the pot. Since Fish Smart Electric Kettle come with 1500W(800mL) /1000W(600mL), temperature controller make heating speed fast when less water in the pot.

Q: Why does screen display abnormally?/ Why doesn't kettles work?

A: Electric Kettle(800mL) work with 1500W. Please make sure to use 1500W stable power (eg, Please pay attention to the power mark when use plug board ; It is not recommended use high power electrics at the same time to avoid insufficient total power)



Name: Electric Kettle 800mL
Model: F11-1500 / F11W-1500
F12-1500 / F12W-1500



Name: Electric Kettle 600mL
Model: F09-1000 / F09W-1000
F10-1000 / F10W-1000

Contents: Lid, Kettle, Base, Power cable, User' manual

Warranty period: 1 year

Designed by: Shanghai TIMEMORE Coffee Equipment Co., LTD.

Assembled by: Jiangmen Fanwei General Electric Co.,LTD.

Web: www.timemore.com Tel: 400-684-0200

